

KANE

Weekly Update

DATE: 22nd of March 2024

MostynCopper



Waypoint 

WORKS COMPLETED THIS WEEK

- Building A
 - Installation of Masta Tex blinding (Middle and Northern LGF)
 - Installation of under slab waterproofing (Middle and Northern)
 - Steel fixing to slab on ground Pour 3 and 4
 - Precast starter bar As-Builts
 - Electrical rough ins Slab on ground
 - Temp board Installation
 - Strip formwork and edge board
- Building B
 - Steel fixing to structural footings
 - Pool contractor continue with rough in works / Pool base poured
 - Installation of Masta Tex blinding (North LGF)
 - Under-slab waterproof membrane (Lower ground floor slab – NE)
 - Continue Hydraulic inground drainage to lower ground floor
 - Waterproofing of lower storage walls
 - Slab on ground reinforcement fixing
 - Formwork edge boards to slab on ground (North)
 - Electrical rough ins Slab on ground
 - Detail excavation and stormwater works to western facade

WORKS PLANNED NEXT WEEK

- Building A
 - Footing pour 4,5 & 6
 - Edge boards, set downs and EJ's
 - Tie Steel & mesh to Building A SOG Pour 4,5 and 6
 - Installation of conduits for Pour 4,5 and 6
 - Pour SOG 4,5 & 6
 - Complete membrane to under slab on ground
 - Footing pour 7
- Building B
 - Steel fixing for SOG pour 1
 - Installation of conduits for pour 1
 - Surveying Grid's, BM's and As-builts for pour 1
 - Pour SOG Pour 1
 - Pour West Stairs and West Walls
 - Detailed excavation & Subsoil drainage SOG
 - Waterproofing Membrane
 - Storage room pour slab

PROGRESS PHOTOS



Building B pool pour

PROGRESS PHOTOS



Pool base complete

PROGRESS PHOTOS



22 Mar 2024 at 7:50:00 am
Kellyville NSW 2155
Australia
Kellyville Memorial Park

Building B

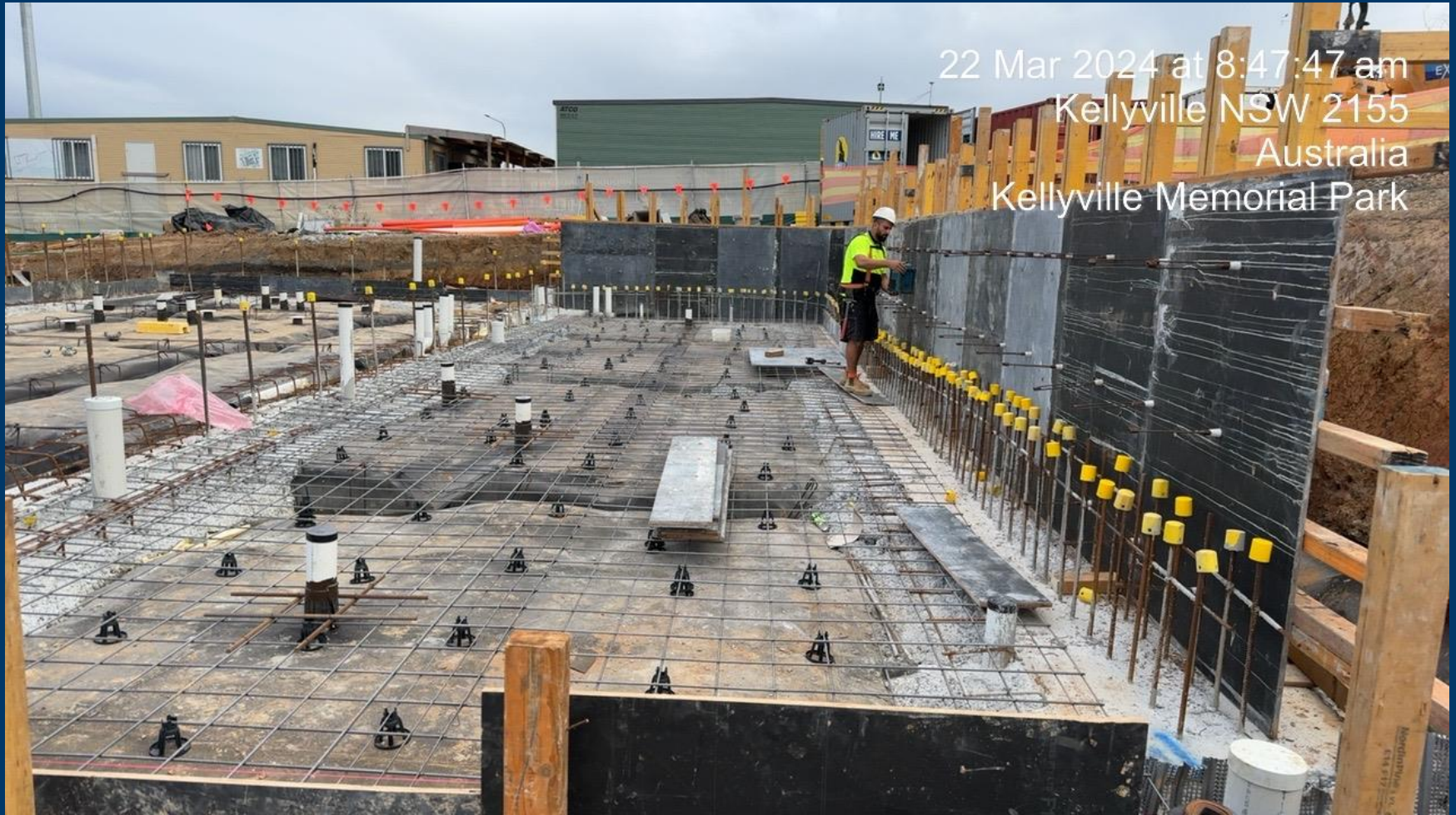
PROGRESS PHOTOS

22 Mar 2024 at 7:57:20 am
Kellyville NSW 2155
Australia
Kellyville Memorial Park



Building B- Walls

PROGRESS PHOTOS



22 Mar 2024 at 8:47:47 am
Kellyville NSW 2155
Australia
Kellyville Memorial Park

Building B – Formwork

PROGRESS PHOTOS

22 Mar 2024 at 9:51:21 am
Kellyville NSW 2155
Australia
Kellyville Memorial Park



Building A